

APPROVED BAGS



CLEAR TOTE

Size may not exceed 12"x6"x12"
Items in tote must be loose



PLASTIC ZIP TOP BAG

Size may not exceed one gallon



CLUTCH OR SMALL PURSE

Size may not exceed 6.5"x4.5"
May include a handle or strap



SEAT CUSHION

No larger than 16"x16"

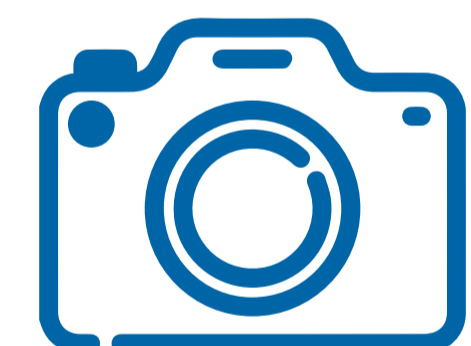


WALLET



BINOCULARS

No case



CAMERA

No professional lenses
No case

NON-APPROVED BAGS

Please do not bring or attempt to bring in any of the following bags:

- BRIEFCASE
- BACKPACK
- BINOCULAR CASE
- CAMERA CASE
- CINCH BAGS
- CLEAR BACKPACK
- COMPUTER BAG
- COOLERS
- DRAWSTRING BAG
- FANNY PACK
- LUGGAGE
- MESH BAG
- OVERSIZED TOTE BAG
- TINTED PLASTIC BAGS
- LARGE PURSE

Bags needed for Medical reasons, Media, Credentialed Staff, and Diaper Bags are permitted after proper inspection.